

Relevant Interests and Duties

September 2021

Netwealth Superannuation Services Pty Limited

ABN 80 636 951 310

AFSL No. 528032

RSE License L0003483

Level 6/180 Flinders Street
Melbourne VIC 3000

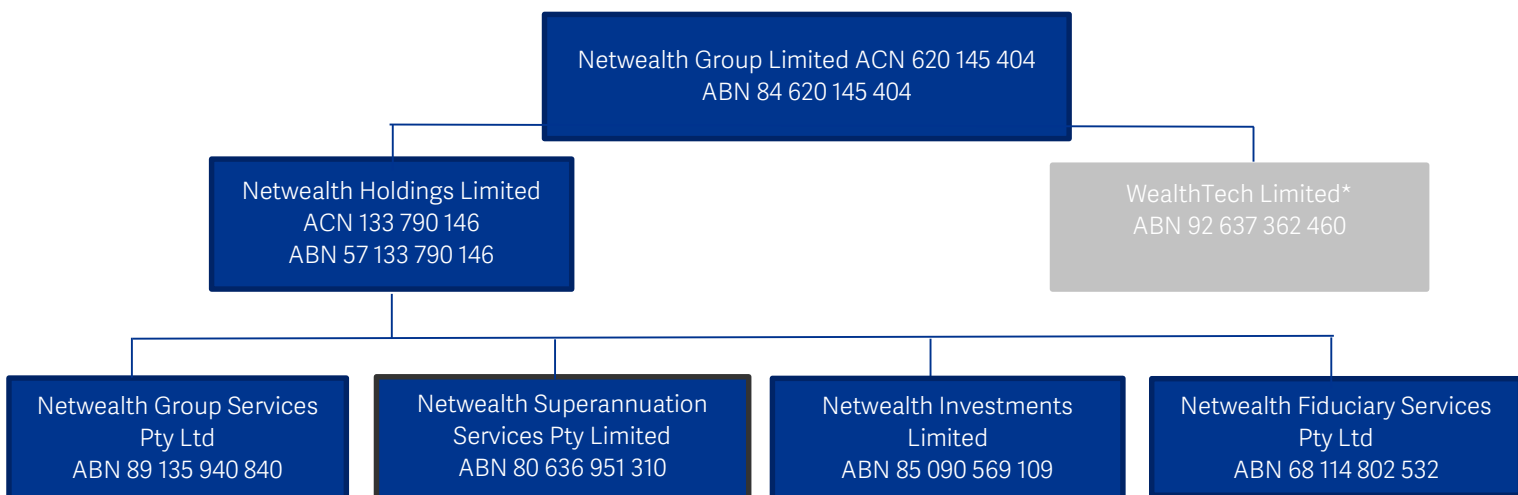
PO Box 336
South Melbourne VIC 3205

Netwealth Superannuation Services (NSS)

Company Structure

Netwealth Group Limited is the parent entity of NSS. Netwealth Group Limited is listed on the ASX.

Netwealth Groups Limited's Corporate Structure



*WealthTech Pty Ltd is not operational as at September 2021.

Relevant Interests and Duties

Responsible Person	Directorships / Position	Relevant Disclosed Personal Interests	Relevant Duties** to NSS
Rita Harris (Independent Director)	<ul style="list-style-type: none"> - Netwealth Superannuation Services Pty Ltd ABN 80 636 951 310 - The School of St Jude ABN 86 966 180 821 - CRC Longevity (member of interim board) - Fullbridge Capital Pty Ltd (Advisory Board Member) 	<ul style="list-style-type: none"> Directors fees and superannuation Account holder in NIL products No gift or benefit disclosed* 	<ul style="list-style-type: none"> Chair: <ul style="list-style-type: none"> - NSS Board Member: <ul style="list-style-type: none"> - Audit, Risk & Compliance Committee - Superannuation Investment Committee
Jack Diamond (Independent Director)	<ul style="list-style-type: none"> - Netwealth Superannuation Services Pty Ltd ABN 80 636 951 310 - Box Hill Institute Group Pty Limited ABN 90 614 150 248 - Centre of Adult Education (CAE) ABN 84 434 201 642 - State Sports centres (MSAC) ABN 16 374 471 008 - Bcyber Pty Ltd ABN 67 624 307 124 - Diamond Consulting (VIC) Pty Ltd ABN 41 144 878 660 - Diamond Family Trust ABN 22 527 276 109 	<ul style="list-style-type: none"> Directors fee and superannuation No gift or benefit disclosed* 	<ul style="list-style-type: none"> Chair: <ul style="list-style-type: none"> - Superannuation Investment Committee Member: <ul style="list-style-type: none"> - NSS Board - Audit, Risk & Compliance Committee
Davyd Lewis (Non-Executive Director)	<ul style="list-style-type: none"> - Netwealth Investments Ltd ABN 85 090 569 109 - Netwealth Holdings Ltd (NHL) ABN 57 133 790 146 - Netwealth Group Limited (NWL) ABN 84 620 145 404 - Netwealth Group Services Pty Ltd ABN 89 135 940 840 - Netwealth Fiduciary Services Pty Ltd ABN 68 144 802 532 - Netwealth Superannuation Services Pty Ltd ABN 80 636 951 310 - WealthTech Limited ABN 92 637 362 460 	<ul style="list-style-type: none"> Directors fees and superannuation Shareholder NGL Account holder in NIL products and family held NIL accounts No gift or benefit disclosed* 	<ul style="list-style-type: none"> Chair: <ul style="list-style-type: none"> - Audit, Risk & Compliance Committee Member: <ul style="list-style-type: none"> - NSS Board - Superannuation Investment Committee
Michael Heine (Joint Managing Director)	<ul style="list-style-type: none"> - Netwealth Investments Ltd ABN 85 090 569 109 - Netwealth Holdings Ltd (NHL) ABN 57 133 790 146 - Netwealth Group Limited (NWL) ABN 84 620 145 404 	<ul style="list-style-type: none"> Directors fees and superannuation Majority shareholder NGL 	<ul style="list-style-type: none"> Member: <ul style="list-style-type: none"> - NSS Board - Audit, Risk & Compliance Committee

* Gifts and benefits received in FY2019 and FY2020 are disclosed where their value was greater than \$300.

Responsible Person	Directorships / Position	Relevant Disclosed Personal Interests	Relevant Duties** to NSS
	- Netwealth Group Services Pty Ltd ABN 89 135 940 840	and family NGL shareholdings	- Superannuation Investment Committee
	- Netwealth Fiduciary Services Pty Ltd ABN 68 144 802 532	Account holder	
	- Netwealth Superannuation Services Pty Ltd ABN 80 636 951 310	NIL products and family held NIL accounts	
	- WealthTech Limited ABN 92 637 362 460		
	- Heine Brothers Pty Ltd ABN 28 006 819 718 (& Secretary)	Gift or benefit disclosed*	
	- Heine Fiduciary Services Pty Ltd ACN 627 727 851 (& Secretary)		
	- Australian Planning Services Pty Ltd ABN 55 010 521 810	* Dinner 2019	
	- Lesmic Nominees Pty. Ltd. ACN 004 978 036 (& Secretary)		
	- Meyer Heine Line Pty Ltd ACN 628 192 647 (& Secretary)		
	- MMH Investment Holdings Pty Ltd ABN 37 138 015 826 (& Secretary)		
	- Net Wealth Dot Com Pty Ltd ABN 72 004 892 915 (& Secretary)		
	- Netjets Pty Ltd. ABN 75 117 787 569 (& Secretary)		
	- Swanston Mortgage Pty Ltd. ABN 61 004 921 135 (& Secretary)		
	- Wealth Investments Pty Ltd. ACN 004 189 669 (& Secretary)		
	- MMH Family Foundation Pty Ltd ABN 68 640 158 461		
	- Michael Heine Family Foundation ABN 41 858 725 289		
Sally Freeman (Non-Executive Director)	- Netwealth Investments Ltd ABN 85 090 569 109	Directors fees and superannuation	Member:
	- Netwealth Holdings Ltd (NHL) ABN 57 133 790 146	Shareholder NGL	- NSS Board
	- Netwealth Group Limited (NWL) ABN 84 620 145 404	Account holder in NIL products	- Audit, Risk & Compliance Committee
	- Netwealth Group Services Pty Ltd ABN 89 135 940 840	No gift or benefit disclosed*	- Superannuation Investment Committee
	- Netwealth Fiduciary Services Pty Ltd ABN 68 144 802 532		
	- Netwealth Superannuation Services Pty Ltd ABN 80 636 951 310		
	- WealthTech Limited ABN 92 637 362 460		
	- Maggie MDAB Pty. Ltd ABN 18 102 205 176 (& Secretary)		
	- Sally Freeman Consulting Pty Ltd ABN 78 636 871 111 (& Secretary)		
	- Eastern Health ABN 68 223 819 017		
	- Commonwealth Games Australia Ltd ABN 55 165 736 898 (Audit Committee)		

* Gifts and benefits received in FY2019 and FY2020 are disclosed where their value was greater than \$300.

Responsible Person	Directorships / Position	Relevant Disclosed Personal Interests	Relevant Duties** to NSS
	<ul style="list-style-type: none"> Member) Regional Investment Corporation ABN 99 528 049 038 - Duff & Phelps Australia Pty Limited (trading as Kroll) ABN 73 116 738 535 (Subcontracting) - Caulfield Grammar School ABN 79 004 170 772 (Audit Committee Member) - HealthShare Victoria ABN 28 087 208 309 (Audit Committee Member) 		
Andrew Holden	<ul style="list-style-type: none"> Current Position - General Manager Netwealth Superannuation Services - Company Secretary for NSS 	<ul style="list-style-type: none"> Salary, superannuation and NGL shareholder Account holder in NIL products and family held NIL accounts Gifts or Benefits* <ul style="list-style-type: none"> * Oaks Day Event Nov 2019 * Aust Open Jan 2020 	
Cory Smith	<ul style="list-style-type: none"> Current Position - Chief Operating Officer Netwealth Superannuation Services - Company Secretary for NSS 	<ul style="list-style-type: none"> Salary and superannuation No gift or benefit disclosed* 	
Matt Heine (Joint Managing Director)	<ul style="list-style-type: none"> - Netwealth Investments Ltd ABN 85 090 569 109 - Netwealth Holdings Ltd (NHL) ABN 57 133 790 146 - Netwealth Group Limited (NWL) ABN 84 620 145 404 - Netwealth Group Services Pty Ltd ABN 89 135 940 840 - Netwealth Fiduciary Services Pty Ltd ABN 68 144 802 532 - WealthTech Limited ABN 92 637 362 460 - Heine Brothers Pty Ltd ABN 28 006 819 718 - Heine Sight Superannuation Pty Ltd ACN 633 205 562 - Heine Fiduciary Service Pty Ltd ACN 627 727 851 (& Secretary) - Australian Planning Services Pty Ltd ACN 010 521 810 - Heine Sight Investments Pty Ltd ACN 605 730 667 - Heine Sight Investments No.2 Pty Ltd ACN 628 343 831 (& Secretary) - Heine Sight Nominees Pty Ltd 628 343 224 (& Secretary) - M & A Heine Pty Ltd as Trustee for the Suhara Foundation ABN 93 820 030 467 	<ul style="list-style-type: none"> Directors fees and superannuation Shareholder NGL and family NGL shareholdings Account holder in NIL products and family held NIL accounts Gifts or benefits* <ul style="list-style-type: none"> * Australian Open Jan 2019 * Australian Open Jan 2020 	

* Gifts and benefits received in FY2019 and FY2020 are disclosed where their value was greater than \$300.



Responsible Person	Directorships / Position	Relevant Disclosed Personal Interests	Relevant Duties** to NSS
Neil Brown	Partner, Deloitte Touche Tohmatsu RSE Auditor	NIL	

* Gifts and benefits received in FY2019 and FY2020 are disclosed where their value was greater than \$300.

