

Relevant Interests and Duties

April 2022

Netwealth Superannuation Services Pty Ltd

ABN 80 636 951 310

AFSL No. 528032

RSE License L0003483

Level 6/180 Flinders Street
Melbourne VIC 3000

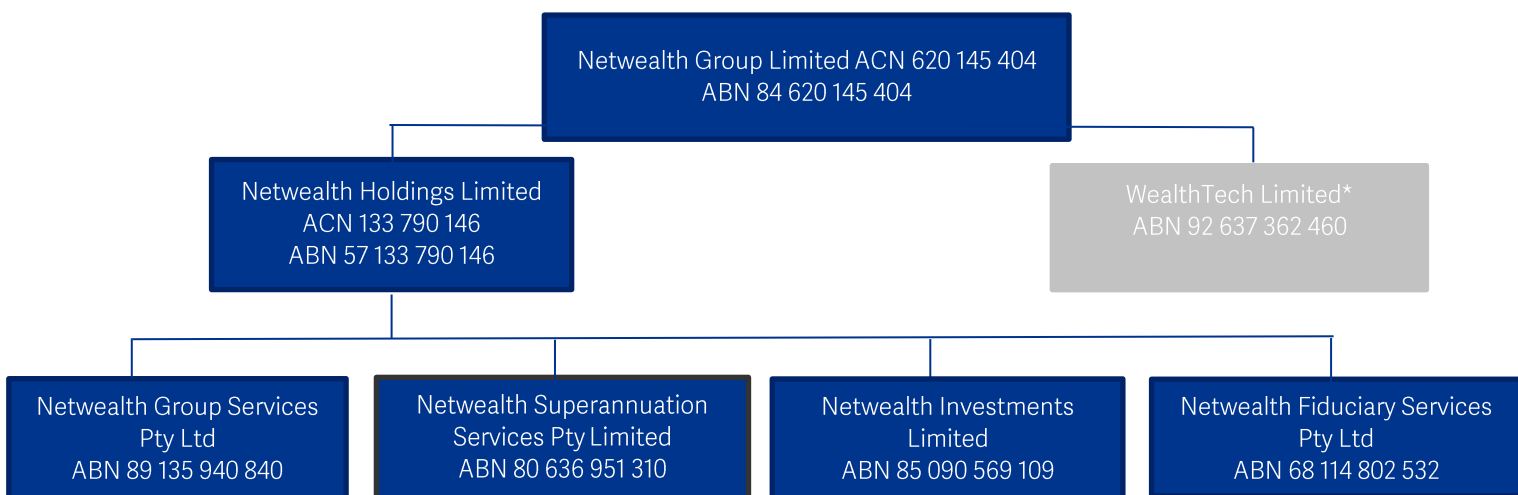
PO Box 336
South Melbourne VIC 3205

Netwealth Superannuation Services Pty Ltd (NSS)

Company Structure

NSS is a wholly owned subsidiary of Netwealth Holdings Limited, which is wholly owned by Netwealth Group Limited. Netwealth Group Limited is listed on the ASX.

Netwealth Groups Limited's Corporate Structure:



*WealthTech Pty Ltd is not currently operational.

Relevant Interests and Duties

Responsible Person	Directorships / Position	Relevant Disclosed Personal Interests	Relevant Duties** to NSS
Rita Harris (Independent Director)	<ul style="list-style-type: none"> - Netwealth Superannuation Services Pty Ltd (NSS) ABN 80 636 951 310 - The School of St Jude ABN 86 966 180 821 - CRC Longevity (member of interim board) - Fullbridge Capital Pty Ltd (Advisory Board Member) - Caulfield Grammar School ABN 79 004 170 772 (Consultant) 	<p>Directors' fees and superannuation</p> <p>Account holder in NIL products</p> <p>No gift or benefit disclosed*</p>	<p>Chair:</p> <ul style="list-style-type: none"> - NSS Board <p>Member:</p> <ul style="list-style-type: none"> - Audit, Risk & Compliance Committee - Superannuation Investment Committee
Lewis Bearman (Independent Director)	<ul style="list-style-type: none"> - Netwealth Superannuation Services Pty Ltd (NSS) ABN 80 636 951 310 - Blue Orbit Asset Management Pty Ltd ABN 74 623 916 816 (Secretary) - Koda Capital Pty Ltd ABN 65 166 491 961 (Responsible Manager) - Lewjen Maaron Investments Pty Ltd ACN 119 591 490 (& Secretary) - QAMF Wellington Pty Ltd ACN 626 691 469 - QCD Fund No.2 Pty Ltd ACN 631 182 066 - QCD Fund Pty Ltd ABN 39 616 809 735 (& Secretary) - QFI Fund Pty Ltd ACN 623 233 456 - QFI Property Fund Pty Ltd ABN 61 623 233 474 - QLDF Pty Ltd ABN 58 629 885 230 - QMD Fund Pty Ltd ABN 11 628 444 897 - QREO Domestic Holdco Pty Ltd ABN 33 610 962 680 - QREO Domestic Holdco Junction Pty Ltd ABN 27 620 109 524 - QREO Domestic Holdco Clydesdale Pty Ltd ABN 95 633 250 076 - QREO Fixed A II Pty Ltd ABN 30 626 691 263 - QREO Fixed A Pty Ltd ABN 79 608 977 215 - QREO Fixed Pty Ltd ABN 56 606 711 013 - QREO Foreign Holdco Pty Ltd ABN 74 612 500 142 - QREO Foreign Holdco Junction Pty Ltd ABN 29 620 109 533 - QREO Foreign Holdco Clydesdale Pty Ltd ACN 633 251 439 - QREO Growth A II Pty Ltd ABN 74 626 691 450 	<p>Directors' fees</p> <p>No gift or benefit disclosed*</p>	<p>Chair</p> <ul style="list-style-type: none"> - Superannuation Investment Committee <p>Member</p> <ul style="list-style-type: none"> - NSS Board - NSS Audit, Risk and Compliance Committee

* Gifts and benefits received in FY2020-FY2022 are disclosed where their value was greater than \$300.

Responsible Person	Directorships / Position	Relevant Disclosed Personal Interests	Relevant Duties** to NSS
	- QREO Growth II Sub Pty Ltd ABN 94 632 069 982		
	- QREO Growth A Pty Ltd ABN 83 608 977 233		
	- QREO Growth II Sub Pty Ltd ABN 45 632 070 065		
	- QREO Growth Pty Ltd ABN 54 606 711 004		
	- QREO Holding II Pty Ltd ACN 626 692 135		
	- QREO II Alexandria Pty Ltd ABN 61 652 677 444		
	- QREO II Alexandria Dev Pty Ltd ABN 33 652 677 702		
	- QREO II Financier Pty Ltd ABN 43 626 692 126		
	- QREO II Toowong Pty Ltd ABN 24 656 435 246		
	- QREO Knoxia Domestic Holdco Pty Ltd ABN 39 616 438 307		
	- QREO Knoxia Foreign Holdco Pty Ltd ABN 62 616 438 405		
	- QREO Nominee Pty Ltd ACN 609 643 898		
	- QREO Pagewood Domestic Holdco Pty Ltd ABN 82 618 367 169		
	- QREO Pagewood Foreign Holdco Pty Ltd ABN 18 618 367 212		
	- QREO 155 King Street Domestic Holdco Pty Ltd ABN 68 618 560 259		
	- QREO 155 King Street Pty Ltd ABN 26 618 562 959		
	- QREO 155 King Street Foreign Holdco Pty Ltd ABN 93 618 560 366		
	- QREOF Cab Pty Ltd ABN 17 634 753 950		
	- QREOF II Assembly Holdco Pty Ltd ABN 57 644 404 437		
	- QREOF II Bellfield Projectco Pty Ltd ABN 84 636 963 105		
	- QREOF II Chatswood Pty Ltd ABN 89 644 225 123		
	- QREOF II JF Dev 1 Pty Ltd ABN 13 646 773 597		
	- QREOF II JF Dev 2 Pty Ltd ABN 36 646 773 695		
	- QREOF II JF Pty Ltd ABN 92 646 672 675		
	- QREOF II SC Pty Ltd ABN 23 654 075 706		
	- QREOF II Willoughby Pty Ltd ABN 88 646 672 657		
	- QREOF II Willoughby Project Co Pty Ltd ABN 51 638 449 760		
	- QREOF Knoxia Pty Ltd ABN 64 616 439 224		
	- QREOF Union Green Pty Ltd ABN 45 634 927 469		
	- QSD Fund Feeders Pty Ltd ABN 32 620 098 660 (& Secretary)		
	- QSD Fund Pty Ltd ABN 30 620 098 651		

* Gifts and benefits received in FY2020-FY2022 are disclosed where their value was greater than \$300.

Responsible Person	Directorships / Position	Relevant Disclosed Personal Interests	Relevant Duties** to NSS
	<ul style="list-style-type: none"> - QSDF Holdco Qld Pty Ltd ABN 26 624 149 891 - QSH No.1 Burnside Pty Ltd ABN 48 630 945 069 - QSH No.1 Keilor Pty Ltd ABN 50 630 945 078 - QSH No.1 Taylors Hill Pty Ltd ABN 90 630 945 247 - Qualitas Assembly Co-Invest Pty Ltd ACN 652 881 797 - Qualitas Australia Multifamily Property Fund Pty Ltd ACN 636 963 098 - Qualitas BTR Impact Fund Pty Ltd ACN 636 795 974 - Qualitas BTR Impact Fund Holdings Pty Ltd ACN 636 797 905 - Qualitas Construction Debt Fund I Pty Ltd ACN 617 008 349 (& Secretary) - Qualitas Construction Debt Fund II Pty Ltd ACN 655 575 803 - Qualitas Fund Holdings Pty Ltd ABN 64 638 720 715 - Qualitas JF Co-Invest Pty Ltd ABN 68 651 962 613 - Qualitas Securities Pty Ltd ABN 90 136 451 128 - Qualitas Seniors Housing No.1 Pty Ltd ABN 92 630 945 256 - Qualitas Seniors Housing Property No.1 Pty Ltd ABN 94 630 945 265 - QUMF No. 1 Pty Ltd ABN 30 628 040 264 - QUMF Property No. 1 Pty Ltd ABN 91 628 040 522 		
Davyd Lewis (Non-Executive Director)	<ul style="list-style-type: none"> - Netwealth Investments Limited (NIL) ABN 85 090 569 109 - Netwealth Holdings Limited (NHL) ABN 57 133 790 146 - Netwealth Group Limited (NWL) ABN 84 620 145 404 - Netwealth Group Services Pty Ltd ABN 89 135 940 840 - Netwealth Fiduciary Services Pty Ltd ABN 68 144 802 532 - Netwealth Superannuation Services Pty Ltd (NSS) ABN 80 636 951 310 - WealthTech Limited ABN 92 637 362 460 	<ul style="list-style-type: none"> Directors' fees and superannuation Shareholder NGL Account holder in NIL products and family held NIL accounts No gift or benefit disclosed* 	<ul style="list-style-type: none"> Chair: <ul style="list-style-type: none"> - Audit, Risk & Compliance Committee Member: <ul style="list-style-type: none"> - NSS Board - Superannuation Investment Committee
Michael Heine (Executive Director)	<ul style="list-style-type: none"> - Netwealth Investments Limited (NIL) ABN 85 090 569 109 - Netwealth Holdings Limited (NHL) ABN 57 133 790 146 - Netwealth Group Limited (NWL) ABN 84 620 145 404 	<ul style="list-style-type: none"> Directors' fees and superannuation Majority shareholder NGL 	<ul style="list-style-type: none"> Member: <ul style="list-style-type: none"> - NSS Board - Audit, Risk & Compliance Committee

* Gifts and benefits received in FY2020-FY2022 are disclosed where their value was greater than \$300.

Responsible Person	Directorships / Position	Relevant Disclosed Personal Interests	Relevant Duties** to NSS
	- Netwealth Group Services Pty Ltd ABN 89 135 940 840	and family NGL shareholdings	- Superannuation Investment Committee
	- Netwealth Fiduciary Services Pty Ltd ABN 68 144 802 532	Account holder	
	- Netwealth Superannuation Services Pty Ltd (NSS) ABN 80 636 951 310	NIL products and family held NIL accounts	
	- WealthTech Limited ABN 92 637 362 460		
	- Heine Brothers Pty Ltd ABN 28 006 819 718 (& Secretary)	Gifts or Benefits** Australian Open 2022	
	- Heine Fiduciary Services Pty Ltd ACN 627 727 851 (& Secretary)		
	- Australian Planning Services Pty Ltd ABN 55 010 521 810		
	- Lesmic Nominees Pty. Ltd. ACN 004 978 036 (& Secretary)		
	- Meyer Heine Line Pty Ltd ACN 628 192 647 (& Secretary)		
	- MMH Investment Holdings Pty Ltd ABN 37 138 015 826 (& Secretary)		
	- Net Wealth Dot Com Pty Ltd ABN 72 004 892 915 (& Secretary)		
	- Netjets Pty Ltd. ABN 75 117 787 569 (& Secretary)		
	- Swanston Mortgage Pty Ltd. ABN 61 004 921 135 (& Secretary)		
	- Wealth Investments Pty Ltd. ACN 004 189 669 (& Secretary)		
	- MMH Family Foundation Pty Ltd ABN 68 640 158 461		
	- Michael Heine Family Foundation ABN 41 858 725 289		
Sally Freeman (Non-Executive Director)	- Netwealth Investments Limited (NIL) ABN 85 090 569 109	Directors' fees and superannuation	Member: - NSS Board
	- Netwealth Holdings Limited (NHL) ABN 57 133 790 146		- Audit, Risk & Compliance Committee
	- Netwealth Group Limited (NWL) ABN 84 620 145 404	Shareholder NGL	- Superannuation Investment Committee
	- Netwealth Group Services Pty Ltd ABN 89 135 940 840	Account holder in NIL products	
	- Netwealth Fiduciary Services Pty Ltd ABN 68 144 802 532	No gift or benefit disclosed*	
	- Netwealth Superannuation Services Pty Ltd (NSS) ABN 80 636 951 310		
	- WealthTech Limited ABN 92 637 362 460		
	- Maggie MDAB Pty. Ltd ABN 18 102 205 176 (& Secretary)		
	- Sally Freeman Consulting Pty Ltd ABN 78 636 871 111 (& Secretary)		
	- Eastern Health ABN 68 223 819 017		

* Gifts and benefits received in FY2020-FY2022 are disclosed where their value was greater than \$300.

Responsible Person	Directorships / Position	Relevant Disclosed Personal Interests	Relevant Duties** to NSS
	<ul style="list-style-type: none"> - Commonwealth Games Australia Ltd ABN 55 165 736 898 (Audit Committee Member) - Regional Investment Corporation ABN 99 528 049 038 - Duff & Phelps Australia Pty Limited (trading as Kroll) ABN 73 116 738 535 (Subcontracting) - Caulfield Grammar School ABN 79 004 170 772 (Audit Committee Member) - HealthShare Victoria ABN 28 087 208 309 (Audit Committee Member) - Melbourne Football Club ABN 27 005 686 902 - Regis Aged Care Pty Ltd ABN 75 125 223 645 - Regis Healthcare Limited ABN 11 125 203 054 		
Andrew Holden (Company Secretary)	Current Position <ul style="list-style-type: none"> - General Manager 	Salary, superannuation and NGL shareholder Account holder in NIL products and family held NIL accounts Gifts or Benefits* * Aust Open Jan 2020 * Aust Open Jan 2021	<ul style="list-style-type: none"> - General Manager of the Office of the Trustee for NSS - Company Secretary for NSS
Cory Smith (Company Secretary)	Current Position <ul style="list-style-type: none"> - Chief Operating Officer 	Salary and superannuation No gift or benefit disclosed*	<ul style="list-style-type: none"> - Chief Operating Officer of the Office of the Trustee for NSS - Company Secretary for NSS
Matt Heine (Senior Manager)	<ul style="list-style-type: none"> - Netwealth Investments Limited (NIL) ABN 85 090 569 109 - Netwealth Holdings Ltd (NHL) ABN 57 133 790 146 - Netwealth Group Limited (NWL) ABN 84 620 145 404 - Netwealth Group Services Pty Ltd ABN 89 135 940 840 - Netwealth Fiduciary Services Pty Ltd ABN 68 144 802 532 	Directors' fees and superannuation Shareholder NGL and family NGL shareholdings Account holder in NIL products and family held NIL accounts	Joint Managing Director of Netwealth Investments Limited (NIL) – material outsourced serviced provider to NSS

* Gifts and benefits received in FY2020-FY2022 are disclosed where their value was greater than \$300.

Responsible Person	Directorships / Position	Relevant Disclosed Personal Interests	Relevant Duties** to NSS
	<ul style="list-style-type: none"> - WealthTech Limited ABN 92 637 362 460 - Heine Brothers Pty Ltd ABN 28 006 819 718 - Heine Sight Superannuation Pty Ltd ACN 633 205 562 - Heine Fiduciary Service Pty Ltd ACN 627 727 851 (& Secretary) - Australian Planning Services Pty Ltd ACN 010 521 810 - Heine Sight Investments Pty Ltd ACN 605 730 667 - Heine Sight Investments No.2 Pty Ltd ACN 628 343 831 (& Secretary) - Heine Sight Nominees Pty Ltd 628 343 224 (& Secretary) - M & A Heine Pty Ltd as Trustee for the Sahara Foundation ABN 93 820 030 467 	<ul style="list-style-type: none"> Gifts or benefits* * Australian Open Jan 2020 	
Lani Cockrem (RSE Auditor)	Partner, Deloitte Touche Tohmatsu	Nil	RSE Auditor of the Netwealth Superannuation Master Fund

* Gifts and benefits received in FY2020-FY2022 are disclosed where their value was greater than \$300.