

Welcome to Lens, Netwealth's monthly newsletter that sharpens your focus on the latest technology news and innovation trends for advisers. Just like a lens brings clarity, we aim to provide a clear view of the global tech landscape.

**From LinkedIn's first Artificial Intelligence (AI) capability that's designed to make life easier for recruiters, through to a new, free, cyber resilience support service for Australian small businesses, there's a lot for advice firms to take advantage of in the tech world right now.**

## TECH NEWS THAT CAUGHT OUR EYE

**LinkedIn launches first AI agent:** The professional networking site's 'Hiring Assistant' is designed to automate recruitment tasks, enhancing efficiency by streamlining job descriptions, candidate sourcing, and engagement. [1] [2]

**Apple Intelligence is now live:** The tool is up and running on iPhone, iPad, and Mac, and introduces advanced writing assistance, intuitive photo editing, and a more conversational Siri. [1] [2] [3]

**AI impacting climate goals:** The surge in AI use is driving up data centre energy consumption, challenging the green agenda of companies like Google, Microsoft, and Nvidia. [1]

**New SME cyber support:** The Government has launched the Small Business Cyber Resilience Service, offering free, tailored, one-on-one cybersecurity assistance to small businesses. [1]

**AirPods doubling as hearing aids:** Apple's AirPods Pro 2, with new FDA-authorized software, can now offer a convenient hearing-aid solution for millions of people (gift). [1]

**Grade-tracking apps may cause anxiety:** Tools such as Google Classroom and ClassDojo are constantly monitoring academic performance and behaviour. [1]

## NETWEALTH IQ

### The power of pilots and prototypes for digital change

5 min read

When it comes to digital transformation, it's important to dedicate planning and resources to implementation. In this article based on our 2024 AdviceTech research, we look at the six key attributes involved in rolling out technology successfully.

The first is that some AdviceTech Stars have a formal change process in place for digital and IT initiatives. The second, and perhaps more important, is that they allocate adequate time and resources to implementing technology changes (six in 10 Stars do this).

[Read article](#)

## TOP READS FROM THE NETWEALTH ACCELERATE SUMMIT 2024

Advice profession at tipping point of innovation mindset: Netwealth CEO

[Read more](#)

Just one in 10 advice firms integrate tech effectively: Research

[Read more](#)

'Not a want, it's a must': Automation should be at the heart of CRM choice

[Read more](#)

AI the next 'superstar' player for advice practices

[Read more](#)

## IN CONVERSATION WITH

**Michael Dell, CEO of Dell Technologies**, discusses the potential of AI, how companies can navigate disruption, and the evolution of his leadership style

[Read more](#)

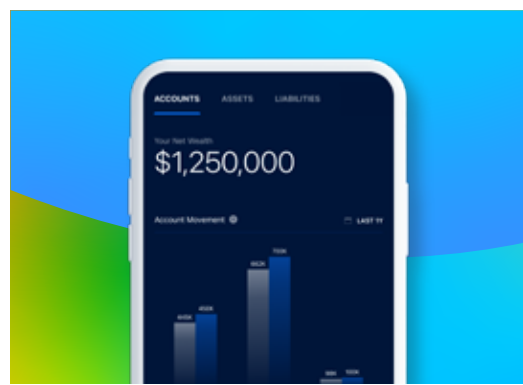
**Yuval Noah Harari, author and historian**, explores the potential threats AI poses to democracy, emphasising the need for regulation and ethical considerations.

[Read more](#)

**Dean Lombardo, Founder, Effortless Engagement**, joins Matt Heine to discuss his unique method of evaluating client progression using short-term milestones and adult learning theory.

[Read more](#)

## NETWEALTH LATEST



With Netwealth's intuitive drag-and-drop interface, create custom report packs for your clients. Present the data and charts that matter most, and demonstrate compelling investment stories.

[Read more](#)

## TECH HACKS & GADGETS

**Prompt engineering:** The "Playoff Method" helps users of the Generative AI tool to generate creative and effective content by leveraging competition-based strategies.

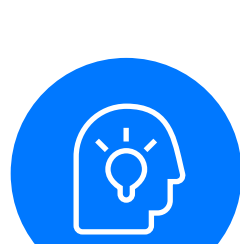
[Read more](#)

**The Oura Ring 4:** This stylish and accurate sleep tracker offers comprehensive data on sleep cycles, heart rate, and overall health.

[Read more](#)

**Apple's new Passwords app:** In iOS 18, this simplifies password management by storing all your passwords, authentication codes, and passkeys in one place, protected by biometric authentication, and allowing automatic device syncing.

[Read more](#)



**33% of advice firms use a client portal today, a further 25% are planning to in the next 24 months.**

[Find out more](#) ↻

## Let us know what you think?

Your feedback helps us create better emails for you!

Disclaimer: Although we like and even use some of the products/services within this newsletter, their appearance is not an endorsement by Netwealth.

## See wealth differently

For more information

1800 888 223

Email us

Visit site